

## Worksheet

### Lesson 1 - Functions Unit

#### Activity 1

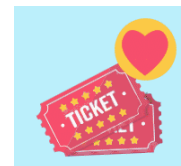
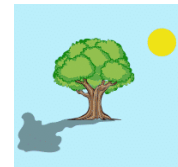
Think about the noise level in the classroom and, in pairs, answer the following questions:

- Is it a characteristic that can change?
- What values can it take?
- What do these values depend on?

#### Activity 2

Look at the images on the right. For each one:

- Identify two variables present in the situation depicted.
- Describe the possible values that these variables can take.
- Indicate whether one of the variables depends on the other.
- Explain how that variable changes when the other variable changes.



You can use the coffee example as a reference.



#### Variables

- Coffee temperature
- Time since served

#### Possible values

- 10°C, 20°C, ...
- 0, 5', 10', ...

**One variable depends on the other?**

The temperature of the coffee depends on how much time has passed since it was served.

**How does that variable change when the other variable changes?**

The temperature of the coffee decreases as time passes since it was served.